

IP68



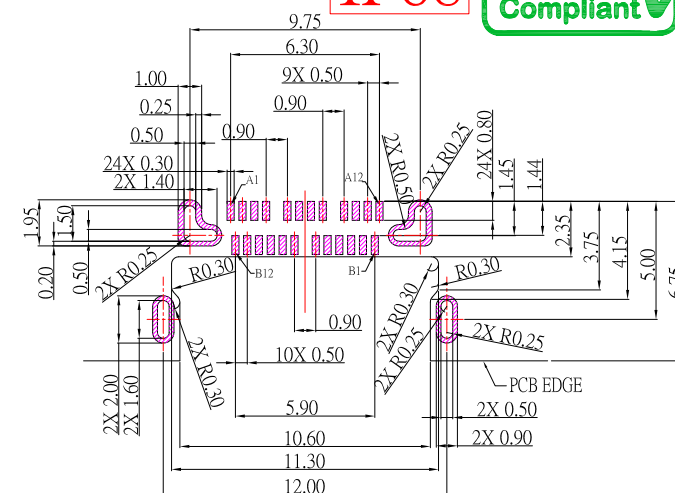
SBC-WP240M7-43x-S410

鍍層厚度：

Blank : 1u"

2 : 15u"

3 : 30u"



RECOMMENDED P.C.B. LAYOUT

SPECIFICATIONS

Electrical:

- 1.Rating: 5.0 A
- 2.Dielectric Withstand Voltage: 100V AC
- 3.Contact Resistance: 40 mΩ Max
- 4.Insulation Resistance: 100 MΩ Min

Mechanical:

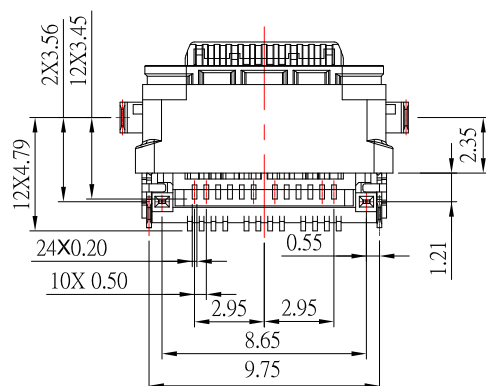
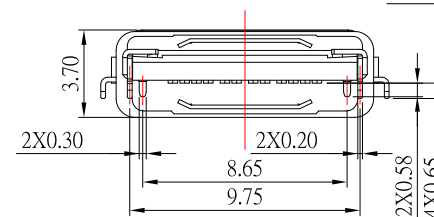
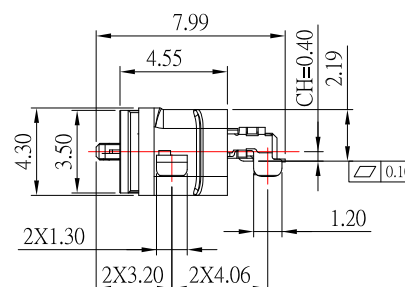
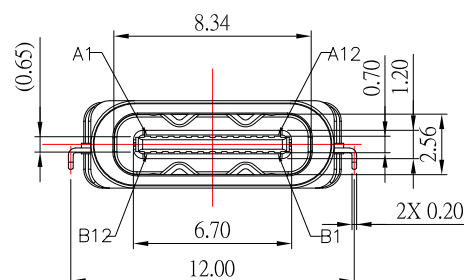
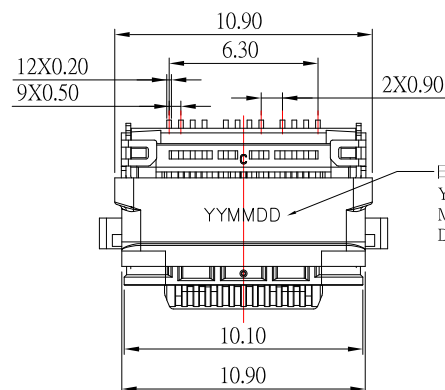
- 1.Connector Mate and Unmate Force
 - 1.1 Mate force: 5~20 N
 - 1.2 Unmate force: 8~20 N

Material:

- 1.Housing: PA46
- 2.Contact: C18400
- 3.Shell: SUS

Finish:

- 1.Contact: Plated Gold in Mating Area ;
Gold Plated on Solder Balls ;
Nickel under plated overall
- 2.Shell: Nickel under Plated surface layer



Pin:

A1	A2	A3	A4	A5	A6	A7	A8	A9	A10	A11	A12
GND	TX1+	TX1-	Vbus	CC1	D+	D-	SBU1	Vbus	RX2-	RX2+	GND
GND	RX1+	RX1-	Vbus	SBU2	D-	D+	CC2	Vbus	TX2-	TX2+	GND
B12	B11	B10	B9	B8	B7	B6	B5	B4	B3	B2	B1

CONTACT

建倚科技股份有限公司
CONTACT TECHNOLOGY CORP.TOLERANCE UNLESS
OTHERWISE STATED :Up to 5 ±0.2
Above 5 ~ 15 ±0.3
Above 15 ~ 30 ±0.4
Above 30 ~ 50 ±0.5
Angle ±0.3°3RD.
ANGEL'S

UNITS

MM

DRAWN BY:

Jack Lu

DATE

09/01/23

CHECKED BY:

Jacky Chen

DATE

09/01/23

APPROVED BY:

Tony Kao

DATE

09/01/23

MAT'L

FINISH

SCALE

1 : 1

SHEET NO.

1 of 1

TITLE

CONNECTOR

MODLE

USBA 防水型 GEN 2 20G TYPE CF Mid Mount CH0.4mm

DWG NO.

SBC-WP240M7-43x-S410

PART NO.

SBC-WP240M7-43x-S410

SIZE

A4

VER

R